

929 PUMP SETTING GAUGE



MODEL 929-1-S

Gauge mounts in suction line between reservoir and chemical pump and allows you to accurately calibrate pump to the desired amount of chemical to be injected. It provides a visual indication of liquid in the reservoir as well as a rapid means for setting the chemical pump.

MODEL 929-1-S-MRH

Same as 929-1-S except with a clear polycarbonate sight tube shield with silk screened Metric Rate and Height scales. Scales are in Centimeters, Milliliters and Liters Per Day based on a one minute test.

MODEL 929-2

Same as 929-1-S except lower gauge connection is a 1/4" quick disconnect plug meeting industrial interchangeability requirements of MIL-C-4109. This allows gauge to be easily moved to various quick disconnect coupler locations.

MODEL 929

Same as 929-1-S except with a 1/4" NPT test valve per Kenco model 933-M on lower end of gauge.

MODEL 933-M

Test valve with 1/4" NPT connections used on lower end of 929 series gauge.

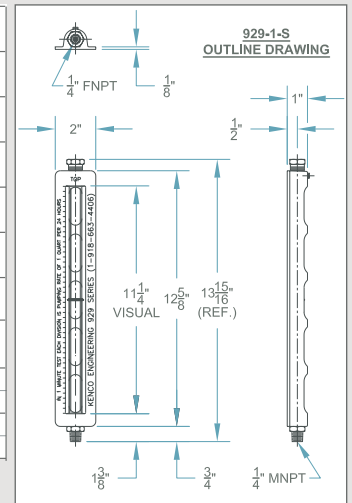
MODEL 933-P

Same as 933-M except with a 1/4" sleeve-type quick coupler per Kenco model 1061 on top for use with Kenco gauge model 929-2. Coupler meets industrial interchangeability requirements of MIL-C-4109.

MODEL SPECIFICATIONS

MODEL NUMBER	BASIC MODEL DESCRIPTION	*MAXIMUM PUMP RATE	*RATE SCALE DIVISIONS	MOUNTING THREAD	VENT SIZE	WETTED METALS	SIGHT TUBE	SEAL MATERIAL
929-1-S	GAUGE ONLY	11.25 GPD	1 QPD	1/4" MNPT	1/4" FNPT	303 S.S.	GLASS	AFLAS
929-1-S-MRH		42 LPD	1 LPD / 1 ML					
929-1-S6	GAUGE ONLY	11.25 GPD	1 QPD	1/4" MNPT	1/4" FNPT	316 S.S.	GLASS	AFLAS
929-1-S6-MRH		42 LPD	1 LPD / 1 ML					
929-2	929-1-S w/COUPLER PLUG	11.25 GPD	1 QPD	1/4" CPLR. PLUG	1/4" FNPT	C.S. / 303 S.S.	GLASS	AFLAS
929-2-MRH		42 LPD	1 LPD / 1 ML					
929	929-1-S w/TEST VALVE	11.25 GPD	1 QPD	1/4" FNPT	1/4" FNPT	C.S. / 303 S.S.	GLASS	AFLAS
929-MRH		42 LPD	1 LPD / 1 ML					
929-S	929-1-S w/TEST VALVE	11.25 GPD	1 QPD	1/4" FNPT	1/4" FNPT	303 / 304 S.S.	GLASS	AFLAS
929-S-MRH		42 LPD	1 LPD / 1 ML					
929-S6	929-1-S6 w/TEST VALVE	11.25 GPD	1 QPD	1/4" FNPT	1/4" FNPT	316 S.S.	GLASS	AFLAS
929-S6-MRH		42 LPD	1 LPD / 1 ML					
933-M	TEST VALVE	N/A	N/A	1/4" FNPT	N/A	C.S. / 303 S.S.	N/A	AFLAS
933-M-S6	TEST VALVE	N/A	N/A	1/4" FNPT	N/A	316 S.S.	N/A	AFLAS
933-P	933-M w/QUICK COUPLER	N/A	N/A	1/4" FNPT	N/A	C.S. / 303 S.S.	N/A	AFLAS / BUNA
1061	QUICK COUPLER f/929-2	N/A	N/A	1/4" MNPT	N/A	C.S.	N/A	BUNA
2037	929-2 COUPLER PLUG	N/A	N/A	1/4" FNPT	N/A	C.S.	N/A	N/A

* Maximum Pump Rates are based on a one minute test. Rate Scale Divisions in Quarts Per Day / Liters Per Day are based on a one minute test and Scale Divisions in Milliliters are based on gauge volume.



ORDERING SYSTEM

929 Pump Setting Gauge

REQUESTED BY: _____ COMPANY: _____

ADDRESS: _____ CITY: _____ STATE: _____ ZIP: _____

PHONE: _____ FAX: _____ EMAIL: _____

Model Number

929-1-S	929-2	933-M	1061
929-1-S-MRH	929-2-MRH	933-M-S	2037
929-1-S6	929	933-M-S6	
929-1-S6-MRH	929-MRH	933-P	

O-ring Seal Material Options other than Aflas:

- B = Buna-N
- E = Ethylene Propylene
- V = Fluorocarbon
- T = PTFE (Not available on Test Valve)

Represented by:

Kenco Sales Offices:

PO Box 470426
Tulsa, OK 74147
phone 918.663.4406
fax 918.663.4480
<http://www.kenco-eng.com>
email: info@kenco-eng.com

Baton Rouge Office
11616 Industriplex, Suite 7
Baton Rouge, LA 70809
phone 225.755.1912
fax 225.755.1913
<http://www.kenco-eng.com>
email: kenco-la@tlxnet.net

